

SAILING INDONESIA

 NEPTUNE CRUISE



THE YACHT

Discover all Neptune has to offer

GUESTS

14

CREW

9

CABINS

7

LENGTH

40m

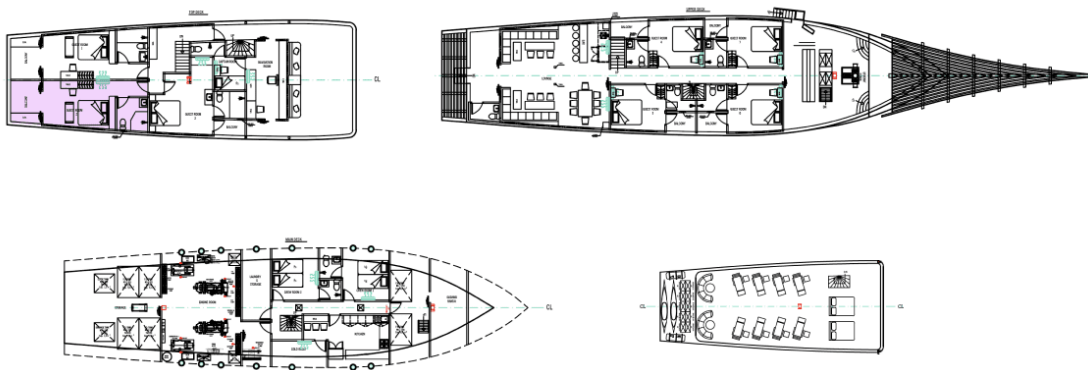
Neptune, an exquisite 40-meter phinisi yacht, glides effortlessly through the Indonesian archipelago, offering seven luxurious staterooms for up to 14 guests, manned by a dedicated crew.

Crafted by the esteemed Bulukumba boatbuilders, her construction pays homage to UNESCO-recognized traditions, while incorporating contemporary elegance and innovation, ensuring a journey that's as serene as it is adventurous.



Specifications

Guests	14	Year	2022
Crew	9	Length	40m
Master Cabin	1	Width	8m
Suite Cabins	2	Depth	4m
Deluxe Cabins	4	Weight	260GT (Gross Tonnage)
Toilets	7 (1 Per Cabin)	Hull Material	Ulin Wood Juti Wood
Life Boat	2	Engines	2 x W Marine 8D16
		Cruising Speed	6-10knots



Inclusions & Exclusions

✓ Airport transfer

✓ Pick up and drop off (in and out harbour)

✓ 3 courses when live on boat

✓ Chef and boat crew

✓ Sundeck, beanbags and lazy chairs

✓ Snorkeling equipment

✓ Mineral water, coffee and tea

✓ Local guide

✓ Linen & towels

✗ International/domestic flights & visas

✗ Travel & medical insurance

✗ Alcoholic drinks and snacks

✗ Accommodation before and after sailing

✓ Life jacket

✓ Documentation (Drone & Camera)

✓ Transportation Mobil Innova

✓ Waerebo entrance fee

✓ 1 night accom. in Waerebo village

✓ Motorbike transfer

✓ Waelu'u ceremony fee

✓ 4 x Makan selama Perjalanan

✓ Porter

✗ Personal expenses

✗ Tipping guide, driver and crew

✗ Documentation (video/photos) ask us

✗ Entrance fee to Komodo National Park



CABIN ACCOMMODATION

MAIN DECK

Cabin 1 (Deluxe Cabin)

Queen size bed for 2 pax
Private balcony and ensuite bathroom

Cabin 2 (Deluxe Cabin)

Queen size bed for 2 pax
Private balcony and ensuite bathroom

Cabin 3 (Deluxe Cabin)

Queen size bed for 2 pax
Private balcony and ensuite bathroom

Cabin 4 (Deluxe Cabin)

Queen size bed for 2 pax
Private balcony and ensuite bathroom

UPPER DECK

Cabin 5 (Suite Cabin)

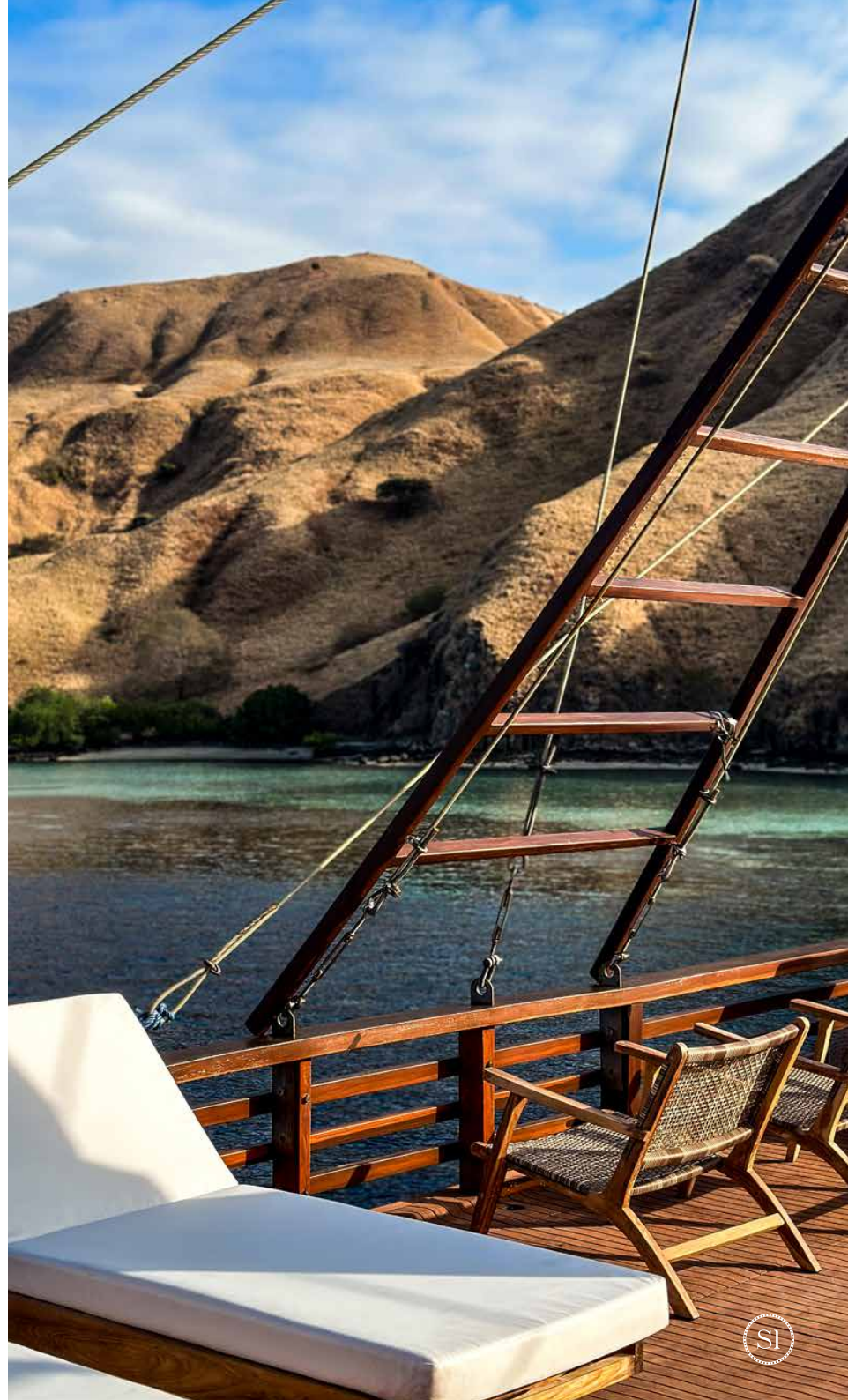
Queen size bed for 2 pax
Private balcony and ensuite bathroom

Cabin 6 (Suite Cabin)

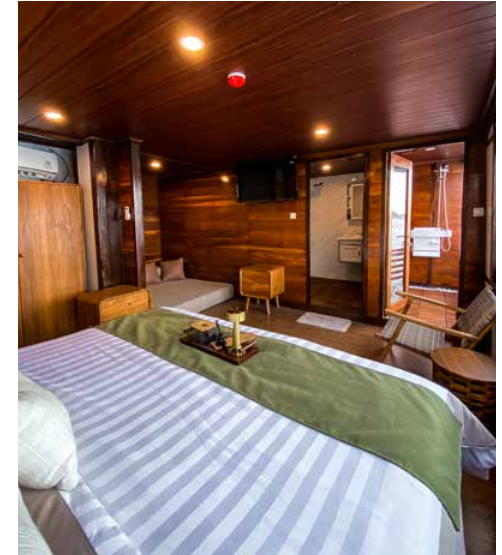
Queen size bed for 2 pax
Private balcony and ensuite bathroom

Cabin 7 (Master Cabin)

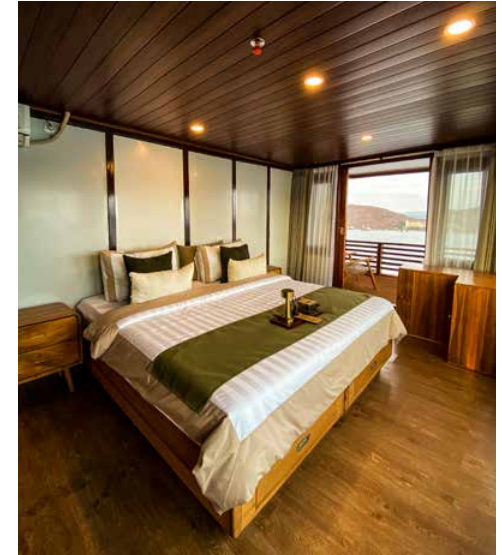
Queen size bed for 2 pax
Private balcony and ensuite bathroom



MASTER CABIN



SUITE CABIN



DELUXE CABIN



INDOOR



OUTDOOR





DESTINATION

Komodo National Park

Extending eastward from Bali are the enchanting islands of Lombok, Sumbawa, and Flores.

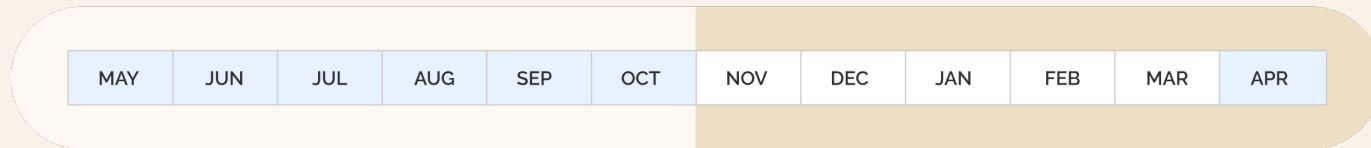
Off Flores' coast, you'll find the UNESCO World Heritage-listed Komodo National Park, a premier destination for cruisers in Indonesia. Famed for its native Komodo dragons, which locals revere as descendants of a dragon princess, Komodo National Park offers an unrivaled cruising experience.

PACKAGES

Sail Komodo National Park in 1 of 7 luxury cabins

DRY SEASON

WET SEASON



Peak season Low season



MASTER CABIN

3 Days 2 Nights

The Master Cabin combines privacy, luxury, and stunning views for an unparalleled experience.



SUITE CABIN

3 Days 2 Nights

Suite Cabins offer a luxurious, spacious haven with queen-sized beds and refined comfort.



DELUXE CABIN

3 Days 2 Nights

Deluxe Cabins provide cozy elegance with convertible twin-to-double beds for a restful retreat.

Your day to day guide

DAY 1

Your journey begins the moment you arrive, with a warm welcome either at the airport or directly from your hotel, as we escort you to the harbor of Labuan Bajo, setting the stage for an adventure across the sea.

Kelor Island: A Canvas of Nature

Step onto Kelor Island and be greeted by pristine white sands underfoot, inviting you for a refreshing swim in its crystal-clear waters. For those who seek a view from above, a trek across the island reveals breathtaking panoramas, a reward for your efforts and a promise of the beauty that lies ahead.

Menjarite: Underwater Spectacle

The journey continues at Menjarite, a snorkeling haven where the underwater world comes to life. Dive into the embrace of the sea to discover vibrant coral reefs teeming with marine life, a vivid testament to the ocean's hidden treasures.

Kalong Island: Twilight Ballet

As the day wanes, Kalong Island presents a natural spectacle unlike any other. Home to a vast colony of bats, the island comes alive at dusk. These nocturnal creatures take to the skies in a dramatic exodus, painting a scene of wonder against the backdrop of the setting sun. Witnessing this extraordinary flight offers a unique way to savor the sunset, merging nature's quiet with its dynamism.

A Night Beneath the Stars

As twilight deepens, your floating sanctuary becomes a vantage point for one of the day's most magical moments—the migration of thousands of bats under the amber glow of sunset. With the day's adventures behind you, savor the flavors of carefully prepared meals, with lunch and dinner served against the backdrop of the open sea. As night falls, the gentle rocking of the boat lulls you into a peaceful sleep, under a canopy of stars, promising another day of exploration and discovery on the morrow.

Your first day's adventure culminates in a serene embrace of nature's wonders, setting the tone for the experiences that await. Onboard, where the sky meets the sea, you're not just a traveler; you're part of a moving world, ever-changing, ever-beautiful.

Your day to day guide

DAY 2

Padar Island: A Hiker's Panorama

Embark on an adventure to Padar Island, a breathtaking natural marvel set off the coast of Labuan Bajo. Similar to the ascent of Kelor Island, Padar challenges you with a climb of 800 concrete steps to its summit. The journey to the top, taking roughly 40 minutes, unveils the island's dynamic landscape, where the savanna shifts hues from lush green to golden brown depending on the season. At its peak, revel in the stunning vista of three distinct beaches, each a splash of color against the island's rugged terrain.

Pink Beach Padar: A Spectrum of Coral

Setting sail towards Pink Beach, prepare to be enchanted by shores tinted in soft rose hues, a rare spectacle created by the coral fragments. It's a gentle reminder of nature's fragile beauty, where the conservation of this unique sand is taken seriously, with strict penalties for those tempted to take a piece home. Here, indulge in sunbathing, snorkeling, or capture the picturesque landscape, immersing yourself in a world of vibrant colors and serene waters.

Komodo Island: Realm of the Dragons

Next, we venture to Komodo Island, the domain of the legendary Komodo Dragons. This island offers more than just a glimpse into the lives of these fascinating creatures; it's a sanctuary for a variety of endemic wildlife, including Flores's snakes and birds, each adding to the island's mystique and allure.

Manta Point: The Dance of the Mantas

At Manta Point, witness the majestic dance of a large population of Manta rays, a spectacle as mesmerizing as it is humbling. For those keen on snorkeling or diving, be prepared for strong currents that add an element of thrill to the experience. It's an encounter that demands respect for the power and beauty of the ocean's inhabitants.

Taka Makassar: A Swirl of Sands

A stone's throw from Manta Point lies Taka Makassar, a sliver of paradise where pink and red coral sands meet pristine white, blending into the clear waters that beckon for a swim. This tranquil spot offers a moment of peace and reflection in the heart of nature's vastness.

Dining and Dreaming at Sea

As the stars blanket the sky, your floating haven becomes a place of rest and nourishment. With meals served onboard, each day is rounded off with flavors as rich and varied as the landscapes you've explored. Under the care of our crew, your journey across these waters is one of discovery, relaxation, and awe, inviting you to dream of what the next day will bring on this unforgettable voyage.

Your day to day guide

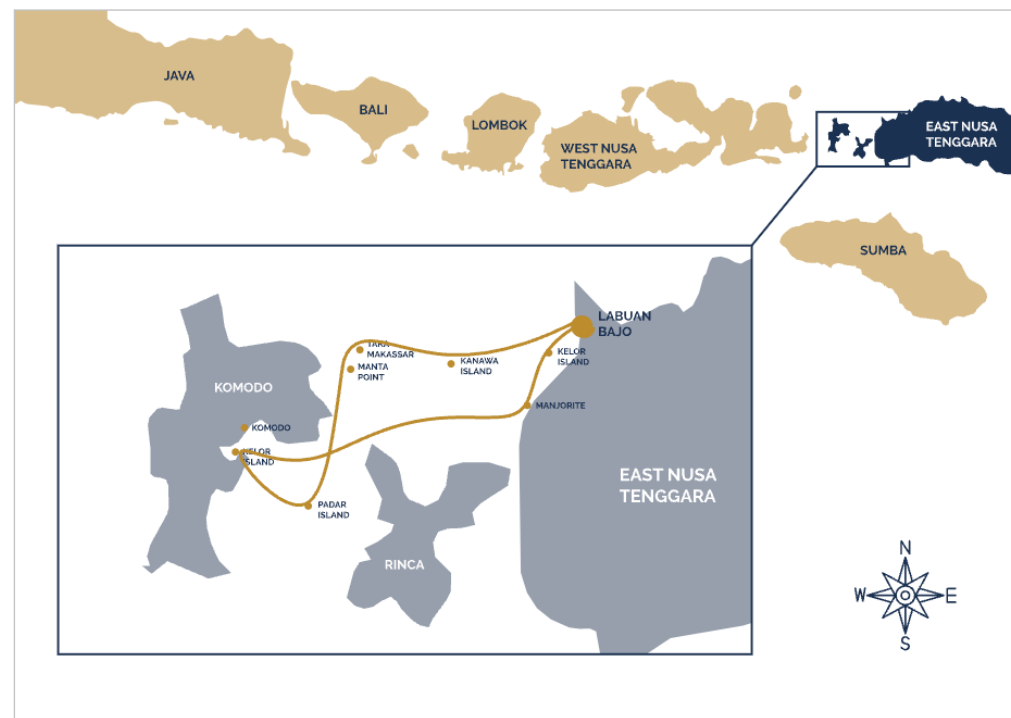
DAY 3

Kanawa Island: A Serene Marine Paradise

Immerse yourself in the tranquility of Kanawa Island, where powdery white sands and crystal-clear waters invite you for a refreshing swim. Renowned as a prime location for those eager to swim or snorkel alongside an array of fish, this island offers an underwater experience like no other. Close to the shore, the curious might even spot baby sharks navigating the shallow waters.

Not just a haven for marine life, Kanawa Island is also celebrated for its picturesque long wooden bridge, a symbol of the island's charm and a gateway to its natural beauty. For a touch of whimsy, seek out the large wooden swings scattered around the island, ready to transport you back to a time of simple joys and laughter under the sun.

As dawn breaks, enjoy a hearty breakfast served aboard the boat, surrounded by the calming sea. Then, as your adventure draws to a close, set sail back to Labuan Bajo harbor, carrying with you memories of the island's serene beaches, vibrant marine life, and the playful swing under the open sky. This return journey marks not just the end of your voyage but the beginning of many stories you'll share about your time at Kanawa Island.



Finer Details

Komodo Marine National Park Charter 3 Days 2 Nights

	USD(\$)
Master Cabin (Salacia Room)	\$1230
Double Bed for 2 Persons Ensuite Bathroom, Private Balcony & Sofa Bed	
Suite Cabin (Trinton Room)	\$1100
Suite Cabin (Nereid Room)	\$1100
Double Bed for 2 Persons Ensuite Bathroom & Private Balcony	
Deluxe Cabin (Thalassa Room)	\$970
Deluxe Cabin (Neso Room)	\$970
Deluxe Cabin (Galatea Room)	\$970
Deluxe Cabin (Despina Room)	\$970
Double Bed for 2 Persons Ensuite Bathroom & Private Balcony	

Private Yacht Charter (Komodo)

	USD(\$)
1 Day Full Rate	\$6,100
Price For 20 Pax Capacity Maximum Capacity 30 Pax Extra Person USD\$65 Per Person Start From 6.00AM - 9.00PM	

Private Charter Live On Board

	USD(\$)	USD(\$)	USD(\$)
	1-10 People	11-14 People	Extra Person
3 Days 2 Nights	\$7,000	\$8,350	\$200
4 Days 3 Nights	\$9,600	\$11,000	\$250
5 Days 4 Nights	\$12,200	\$13,500	\$325 Free setup dinner on beach
6 Days 5 Nights	\$14,000	\$15,400	\$385 Free setup dinner on beach

7 Cabin, each cabin double bed for 2 person
3 Cabin Upper deck have extra bed for 1 - 2 person (Master // Suite // Suite)
All Cabin with ensuite bathroom and private balcony
Capacity 14 Persons and Maximum Capacity 20 Persons

Terms & Conditions

Reservation Policy

All Bookings can be confirmed only after confirming and paying the down payment.

Neptune Cruise has the right to cancel booking if the down payment its not fulfilled.

By making a down payment, Guest agreed to all the term conditions of Neptune Cruise.

Payment and Billing Arrangement

The price / rate applies to the year issued, price every year can change according to fuel costs.

Additional route/activities, Government regulations and other conditions outside Neptune cruise control.

50 % Down Payment. We really appreciate all payment made promptly.

Full Payment must be made at the latest 14 days before the departure date.

For Children aged 5 years and over we are charged the full fee.

Please be aware that bank charges should be paid by the sender and we should receive payment in full amount.

Neptune Cruise is not responsible to the additional bank cost due to transfer made by clients or deposit or balance payment.

Cancellation

IF a cancellation is made by the participant before the date is taken for any reason cancellation fee will be charged with the following conditions :

- After Registering: The Deposit is forfeited (Non-Refundable)
- 30 - 15 Days before the date of departure : 75 % of the cost of the tour package
- Less than 15 days before approval date : 100 % of the tour package fee

Cancellation fee also apply to participants who change the departure date or change the tour package / tour type.

If the cancellation occurs because of forced / unresolvable incident due to natural disasters, riots, terrorism or other sailing can be schedule for another day.

SAILING INDONESIA | NEPTUNE CRUISE

Create a bespoke charter

Discover your dream voyage with Sailing Indonesia's bespoke charters, personalized to explore Indonesia's wonders. From serene beaches to cultural treasures, enjoy tailored itineraries, luxury, and exclusive experiences on your unique journey.

Michelle +62 8 161 908 603
hello@sailingindonesia.com
sailingindonesia.com